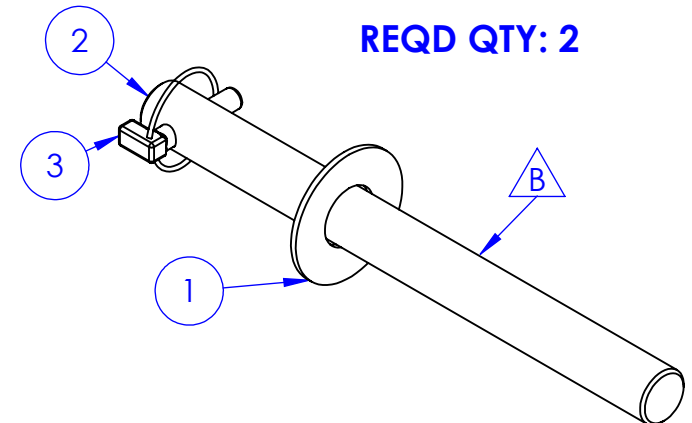
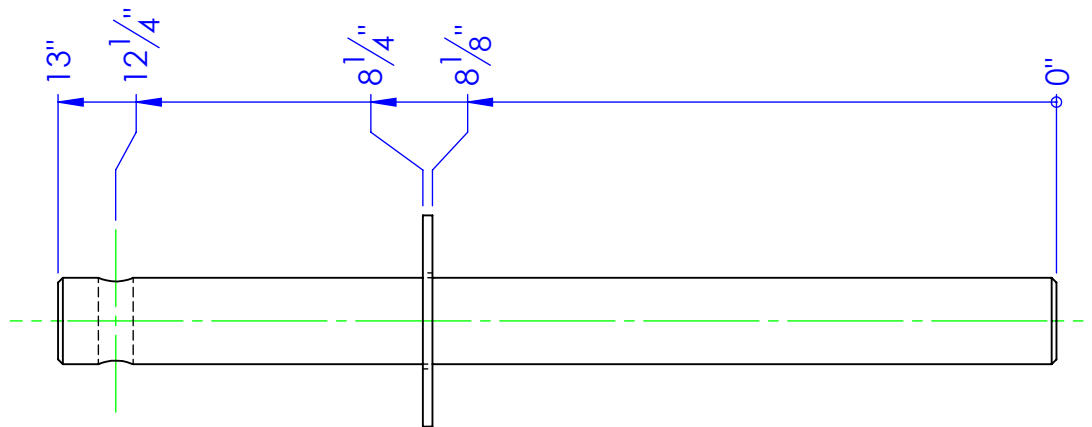
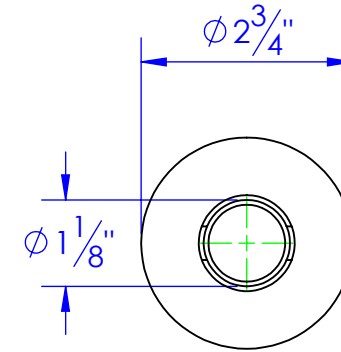
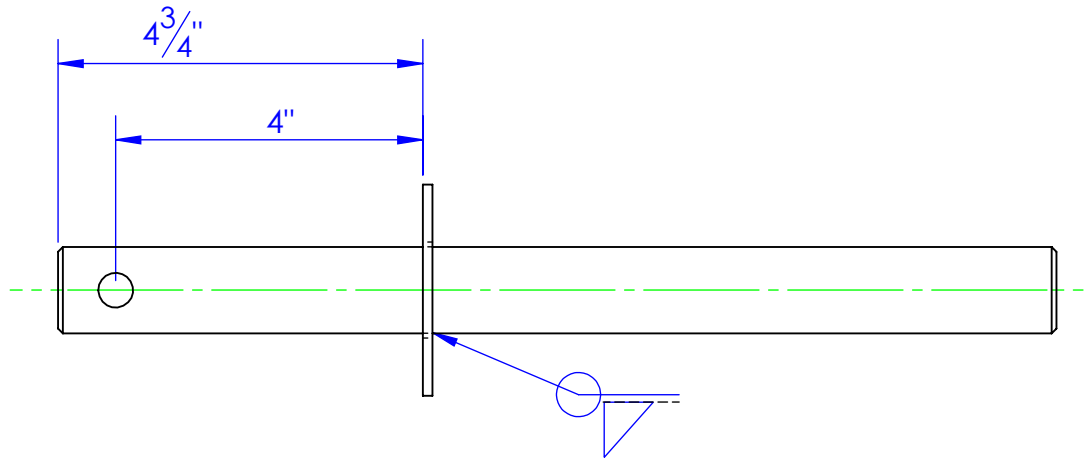


ITEM NO.	PART NUMBER	DESCRIPTION	Material	DRAWING #	QTY.
1	BO-1.125 FW	FLAT WASHER 1-1/8"		STOCK	1
2	FP-SP118A-1	SHAFT, SPINNER	CF ANN 4142 1-1/8 RDx 12	90-1601	1
3	HD-PL .4375 HD	7/16 Lynch Pin.		STOCK	1

REVISIONS			
REV.	DESCRIPTION	DATE	APPROVED
B	UPDATED TO MATCH 3D MODEL	12/17/2012	



PROPRIETARY AND CONFIDENTIAL
THE INFORMATION CONTAINED IN THIS
DRAWING IS THE SOLE PROPERTY OF TRIPLE
C INC. ANY REPRODUCTION IN PART OR
AS A WHOLE WITHOUT THE WRITTEN
PERMISSION OF TRIPLE C INC. IS PROHIBITED.

DIMENSIONS ARE IN INCHES TOLERANCES: FRACTIONAL $\pm 1/16$ ANGULAR: MACH ± 1 BEND \pm TWO PLACE DECIMAL ± 010 THREE PLACE DECIMAL ± 005	
MATERIAL	--
DO NOT SCALE DRAWING	

NAME	DATE
DRAWN HEATH	12/18/2012
PART #	OP-PP-11850
ASM #	
COMMENTS: 50 SERIES, UNROLLING PLAIN PINS	

P.O. BOX 248, SABETHA, KS 66534			
TRIPLE C INC.			
SIZE A	DWG. NO. 90-1607 B	REV. B	
SCALE:1:2.5	WEIGHT: 3.94	SHEET 1 OF 1	